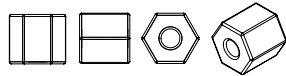




Design by Helena Chmelíková

PRECIOSA Two-Cut Beads

351 31 001; 2 x 10/0



PRECIOSA Fire Polished Beads

151 19 001; 4 mm



*Preciosa Ornela introduces beads and seed beads
from the PRECIOSA Traditional Czech Beads™ brand.*

Preciosa-Ornela.com



TRADITIONAL
CZECH BEADS

DELICATE LINKED NECKLACE MADE USING PRECIOSA TWO-CUT BEADS

Fragile



PRECIOSA

Fragile

This delicate, airy necklace with subtle glints provided by the PRECIOSA Two-Cut Beads will remind you of late winter falls of snowflakes interspersed with the sun's rays. You can also choose from other shades of PRECIOSA Two-Cut Beads and invoke the mood of your favourite season. We wish you much success in your beadworking endeavours.

Materials and tools:

PRECIOSA Two-Cut Beads (TC)
351 31 00; 2x10/0;
78102 crystal with a silver lining;
850x (50 g)

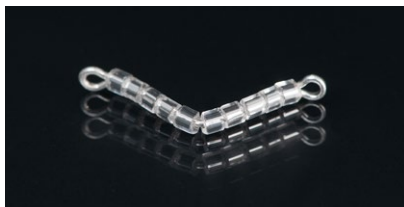
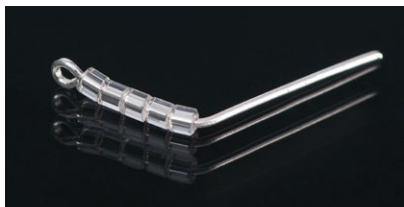


PRECIOSA Fire Polished Beads (FPB)
151 19 001; 4 mm;
02010 alabaster; 30x



30 – 32 mm and 20 – 22 mm eye pins; 5 mm rings;
12 mm pins; a carabiner; an adjusting chain

needle nose pliers; flat nose pliers (for handling the rings and the eyes); a ruler



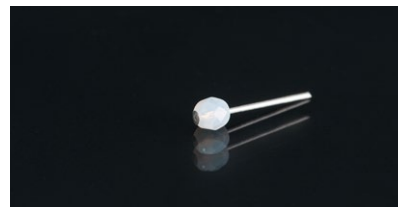
Step 2:
You will need 5 strung eye pins for one fragment. There are fifteen fragments in the necklace.



Step 3:
Connect the eyes on 5 eye pins. You can modify the way the eyes are turned using the flat nosed pliers. String the eyes and then add 1x TC between them. Connect both sides. Twist the outer eyes so that they are facing the same way.



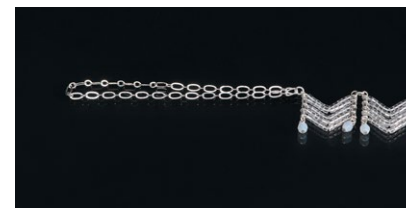
Step 4:
String 1x FPB onto a pin. Twist the eye. Hang it on the fragment before closing the eye.



Step 5:
Connect the fragments through the upper eyes using the rings.



Step 6:
Connect a carabiner and 20 cm of adjusting chain to the outer links. Twist the chain in half and connect both ends in the outer eyes.



Difficulty: ●●●●●

Procedure:

Create the individual fragments and then connect them together with rings.

Step 1:
String 5x TC onto an eye pin. Twist the pin's eye horizontally. Bend the wire behind the strung TC. String a further 5x TC. Twist an eye horizontally on the remainder of the wire. Grip the end of the wire between the plier points and twist the wire around the point. Gently tighten it behind the TC. The eye should be centrally above the TC.