

Terminating the wire.  
Twist the wire between the beads or rocailles several times. It is a good idea to twist the wire around at least two source wires from the stringing. The wire is best tightened using flat nosed pliers. Grip the wire immediately behind the beads and pull the threaded wire with your other hand and release the pliers just before fully tightening the wire.

If you want to hang the snowflake, sew a rocaille loop strung on a second wire or nylon line onto the red and blue snowflakes.



DESIGN BY HELENA CHMELÍKOVÁ

PRECIOSA ORNELA introduces seed beads and beads from the PRECIOSA Traditional Czech Beads brand.

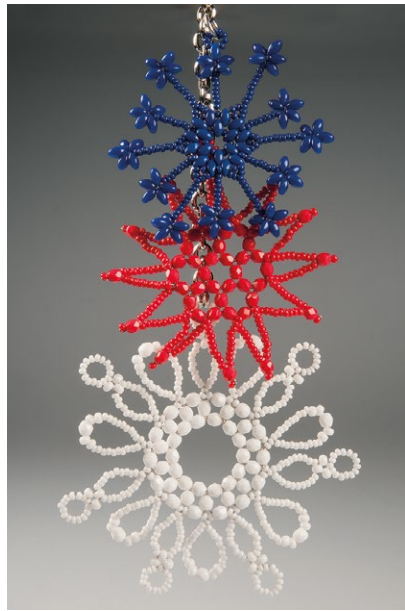


**BEAD SHOP ZÁSADA**  
468 25 Zásada  
+420 488 117 743  
beadshop@preciosa.com  
50°41'49 N, 15°15'55 E

**GLASS SHOP DESNÁ**  
Krkonošská, 468 61 Desná  
+420 488 117 525  
glassshop@preciosa.com  
50°45'41 N, 15°19'7 E

preciosa-ornela.com  
facebook.com/PreciosaOrnela

Februar 2014 © PRECIOSA ORNELA, a.s.



# SEED BEAD SNOWFLAKES

PENDANTS IN NATIONAL COLORS



preciosa-ornela.com © PRECIOSA ORNELA, a.s.

# SEED BEAD SNOWFLAKES

## PENDANTS IN NATIONAL COLORS

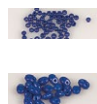
The 22nd Winter Olympics in Sochi are here! They are fundamentally connected with snow and frost and with that little bit of patriotism which is awoken in each of us at least for a short while. The Olympiad unites the entire world for a few weeks as people from all over the globe watch the races and matches and cross their fingers in support of their favourites. Support our sportspeople with original talismans which are also stylish accessories. Seed bead snowflakes in national colors can be used as an effective pendant or as decorations in larger numbers. Thanks to the wide range of colors and shapes of the beads and seed beads from the PRECIOSA Traditional Czech Beads brand, you can take inspiration from our tutorial and create your own color combinations and new snowflake shapes for various occasions. Preciosa Ornela wishes you many happy hours of beadworking and excellent results for our sportspeople.

### Materials and Tools:

A red snowflake  
 PRECIOSA Rocailles (R)  
 311 19 001; 10/0; 93170 (240x)  
 PRECIOSA Fire Polished Beads (FPB)  
 151 19 001; 4 mm; 93180 (42x)

A white snowflake  
 PRECIOSA Rocailles (R)  
 311 19 001; 10/0; 03050 (427x)  
 311 19 001; 8/0; 03050 (49x)  
 PRECIOSA Fire Polished Beads (FPB)  
 151 19 001; 4 mm; 03000 (49x)

A blue snowflake  
 PRECIOSA Rocailles (R)  
 311 19 001; 10/0; 03050 (150x)  
 PRECIOSA Twin™ (T)  
 117 01 323; 2.5x5 mm; 33050 (19x)



PRECIOSA Solo™ (S)  
 117 01 332; 2.5x5 mm; 33050 (59x)



0.30 mm – 0.35 mm wire (platinum or silver),  
 snipping pliers; flat nose pliers (for tightening the wire)

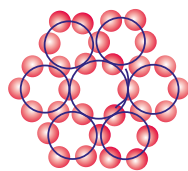
Difficulty: ●●●●●

### Procedure:

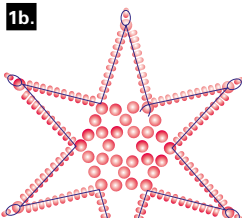
#### The red snowflake

Sew the centre, seven circles consisting of 6 beads. Sew six loops, one linking to another, using 6x 4 mm beads (fig. no.1a). Sew six points with a wider base onto the centre. This will result in a six-pointed star (fig. no. 1b). Add another six points with a narrower base onto the centre. Cross them with the previous points. Pass the narrower point over the wider point on the left-hand side and pass it behind the wider point on the right-hand side (fig. no. 1c).

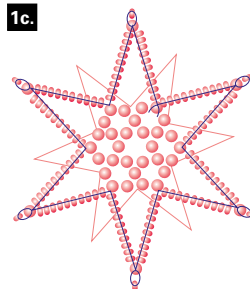
1a.



1b.



1c.



# SEED BEAD SNOWFLAKES

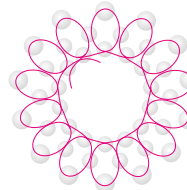
## PENDANTS IN NATIONAL COLORS



#### The white snowflake

Sew a central circle out of fourteen loops, one linked to another, made from 4x 4 mm beads (fig. no. 2a). Alternately sew larger and smaller points onto the central circle. The smaller points consist of a simple loop. Use a right angle weave stitch in the upper section of the larger point. Remember to bend the wire and shape it in the direction of the stringing (fig. no. 2b).

2a.



2b.

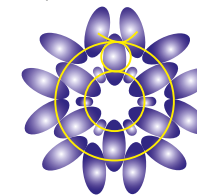


#### The blue snowflake

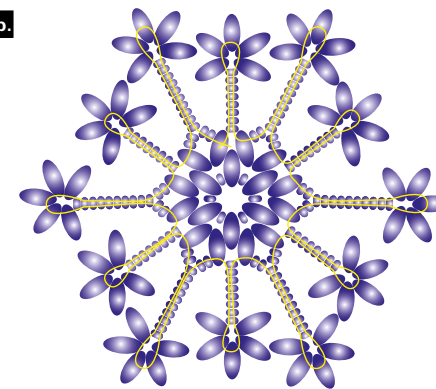
This is the most complicated of the three snowflakes and it requires precision. Alternately string 6x R and 6x T and tighten well. Pass both ends of the wire into second hole of the same Twin. String the longer end in the

gap between the T with 2x new T (fig. no. 3a). Do not cut the ends of the wire. Alternately string a longer and shorter point using R and S with a new wire in the outer holes of the T. The longer should be above the splayed T and the shorter should be above the T from the first row (fig. no. 3b). Reinforce the centre. Pass the uncut longer wire from the centre through the edge of the centre. String 1x R (fig. no. 3c) under the points. If you want to hang the snowflake, string a T in one of the points instead of the top S.

3a.



3b.



3c.

