

# MOTHERS' DAY GIFT

FRAME WITH EMBROIDERY USING PRECIOSA BEADS AND SEED BEADS

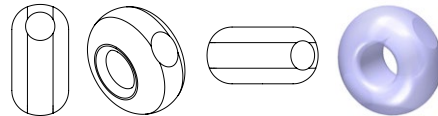
DESIGN BY IVA MASTNÍKOVÁ

PRECIOSA ORNELA introduces seed beads and beads from the PRECIOSA Traditional Czech Beads brand.

## PRECIOSA Charlotte

ART No. 361 11 001

Size: 13/0

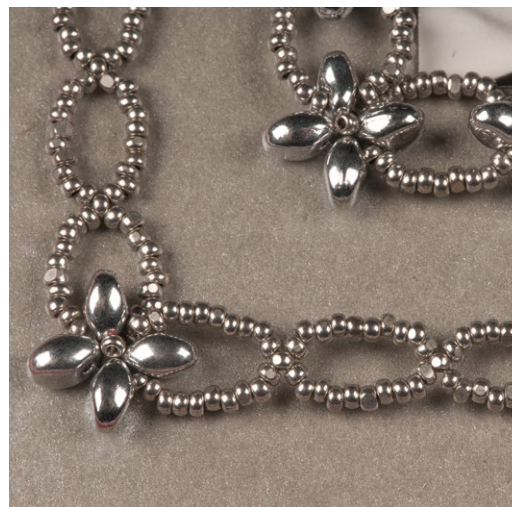


**BEAD SHOP ZÁSADA**  
468 25 Zásada  
+420 488 117 743  
beadshop@preciosa.com  
50°41'49 N, 15°15'55 E

**GLASS SHOP DESNÁ**  
Krkonoská, 468 61 Desná  
+420 488 117 525  
glassshop@preciosa.com  
50°45'41 N, 15°19'7 E

preciosa-ornela.com  
facebook.com/PreciosaOrnela

May 2014 © PRECIOSA ORNELA, a.s.



Embroidery using beads and seed beads is always a guarantee of success. The effective combination of the interesting paper which forms the basis for the frame and the beads and seed beads from the PRECIOSA Traditional Czech Beads range will ensure an excellent result. The embroidery does not have to be complicated. This tutorial from Preciosa Ornela will enable you to try out your skill. The used materials are Charlotte beads, cut rocailles in the 13/0 size, in combination with the small PRECIOSA Solo™ Pressed Bead.

We wish you many ideas and much inspiration when working with beads and seed beads from the PRECIOSA Traditional Czech Beads range.

### Materials and Tools:

PRECIOSA Cut Rocaillies (Charlotte beads) (CH) 361 11 001; 13/0; 18542 silver



PRECIOSA Solo™ 117 01 332; 2.5 x 5 mm; 72000



0.20 mm nylon, pink corrugated cardboard, thick mother-of-pearl and burgundy paper, paper glue, a photo

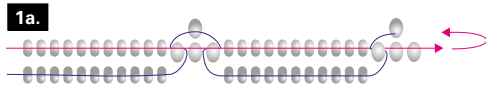
Difficulty: ●●●●●

### Procedure:

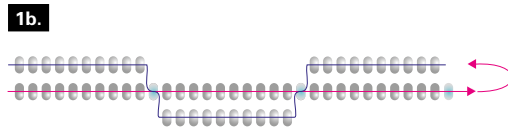
#### Step 1:

First sew the internal frame from bead and seed beads according to the drawing. String 11x CH and 3x S for the internal seed bead frame. Repeat this stringing as necessary. You can also designate the amount according to the actual size of the frame you are making. Only string 2x S in the corners (i.e. each eighth figure). When stringing in the opposite direction in the second row, string the same number

of seed beads, but only 1x S (fig. no. 1a). Thread the nylon through the S in the opposite direction, additionally string 11x CH and thread the line through the S in the opposite direction. Additionally string 1x S and then thread the line in the opposite direction. Repeat this procedure and tie off both ends of the nylon with double knots.



String 132x CH and 1x S for the outer seed bead frame. Repeat the entire procedure 3x. String 3x S and thread the line through the S in the opposite direction, additionally string 10x CH and then thread the nylon through the eleventh Charlotte bead. Thread the nylon in the opposite direction and repeat the whole procedure. At the end, tie off both ends of the nylon with double knots (fig. no. 1b).



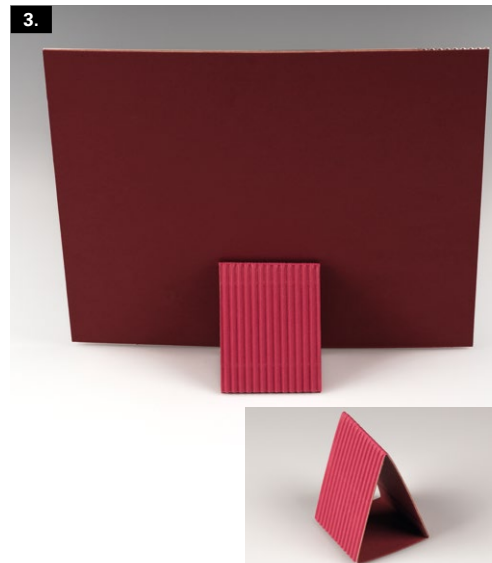
#### Step 2:

Now prepare the paper section. Cut a 16 x 16 cm square from the pearly silver paper, glue a 9 x 9 cm photo in the middle and sew on the inner and outer frames around it. Always sew them together in the corners first. Then prepare 4 pieces of corrugated card with dimensions of 20 x 3 cm. Place the mother-of-pearl paper with the glued photograph and the embroidered seed bead frames and the frame made from the corrugated card in the centre of the burgundy paper so that it is possible to glue them together (the mother-of-pearl paper, the burgundy paper and the frame made from corrugated card). The handmade embroidered frame is almost finished (fig. no. 2).



#### Step 3:

Create a stand for the picture frame. Cut an 18 x 4 cm rectangle from the burgundy paper and a 12.5 x 4 cm rectangle from the corrugated card. Divide the rectangle into sections of 6 cm, 6.5 cm and 5 cm; fold over 0.5 cm and glue the triangle together. Glue the finished stand to the centre of the lower edge on the back of the frame (fig. no. 3).



#### Step 4:

You can further decorate the frame with a small, but effective detail. Cut two triangles from the mother-of-pearl paper, glue them together and glue on a tied bow in a suitable colour. You can then thread this decoration to the upper corner of the frame (fig. no. 4).

