

# RIVOLI WITH PELLETS

BROOCH USING PRECIOSA Pellet™



DESIGN BY ALEKSANDRA LYSENKO

PRECIOSA ORNELA introduces seed beads and beads from the PRECIOSA Traditional Czech Beads brand.

## PRECIOSA Pellet™ Pressed Bead

ART No. 111 01 339  
Size 4 x 6 mm



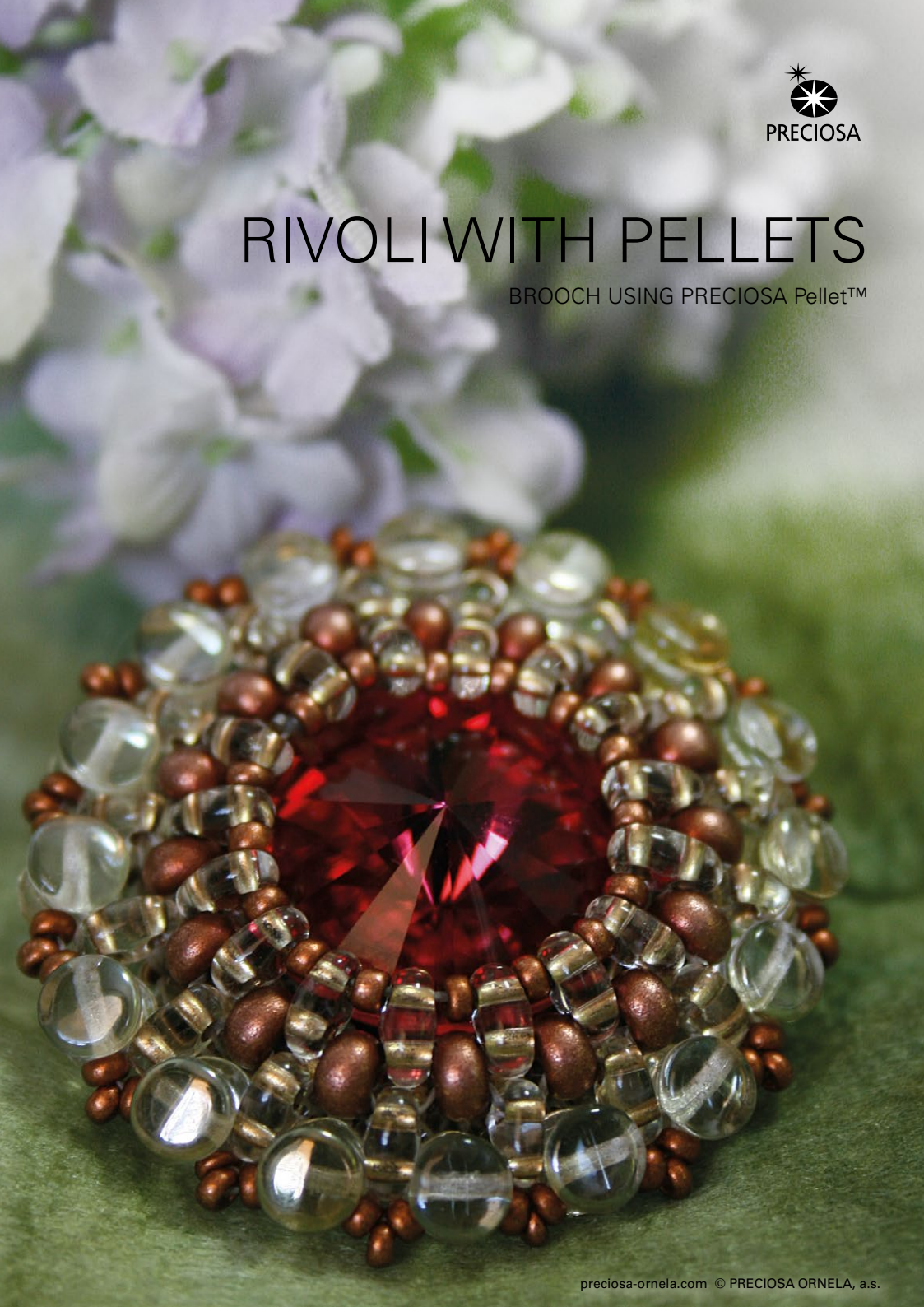
PRECIOSA

**BEAD SHOP ZÁSADA**  
468 25 Zásada  
+420 488 117 743  
beadshop@preciosa.com  
50°41'49 N, 15°15'55 E

**GLASS SHOP DESNÁ**  
Krkonoská, 468 61 Desná  
+420 488 117 525  
glassshop@preciosa.com  
50°45'41 N, 15°19'7 E

preciosa-ornela.com  
facebook.com/PreciosaOrnela

October 2013 © PRECIOSA ORNELA, a.s.



# RIVOLI WITH PELLETS

## BROOCH USING PRECIOSA Pellet™

The edging of stones, buttons, cabochons and other central costume jewelry components is one of the most popular procedures in beadworking involving the use of seed beads and fine beads. Preciosa Ornela presents a tutorial for the creation of a brooch based on the edging of a Rivoli stone with seed beads and beads from the PRECIOSA Traditional Czech Beads brand. We also present the new PRECIOSA Pellet™ bead which excellently complements various types of seed beads and beads.

### Materials and Tools:

MC Rivoli  
436 11 177; 16 mm; Siam 90090 (1x)



PRECIOSA Rocailles (**R11**, **R6**)  
331 19 001; 11/0, 6/0; 01770  
(groups of 16x)



PRECIOSA Twin™ (**T**)  
321 96 001; 2.5 x 5 mm; 68106 (32x)



PRECIOSA Pellet™ Pressed Bead (**P**)  
111 01 339; 4 x 6 mm; 10020 (16x)



scissors, flat nosed pliers (for flattening the nylon line), a thin needle, a brooch mechanism, felt, leather or imitation leather, a 0.20 mm nylon line

Difficulty: 

### Procedure:

Step 1:  
Alternately string 16x **T** and 16x **R11** (**T**- **R11**- **T**- **R11**- **T**- **R11**...) onto the line in the first row and tie the stringing into a circle. Thread the needle and the line through the second hole of the nearest **T** and begin the second row (fig. no. 1).



Step 2:  
In the second row, add 1x **R6** between the second holes of the **T** from the first row. String a total of 16x **R6** (fig. no. 2).



Step 3:  
In the third row, add 1x **T** between each of the **R6** from the previous row. Add a total of 16x **T**. At the end of the row, thread the needle and the line through the second hole of the nearest **T** (fig. no. 3).



Step 4:  
In the fourth row, add **R11** between the second holes of the **T** from the previous row. Once again add a total of 16x **R11** (figure no. 4).



# RIVOLI WITH PELLETS

## BROOCH USING PRECIOSA Pellet™

Step 5:  
Insert the 18 mm Rivoli into the created circle and tighten the stringing of the previous four rows so that the inserted Rivoli is affixed in the centre of the created circle (fig. no. 5).



Step 6:  
Once again add 1x **T** between each **R6** from the second row. Add a total of 16x **T** (fig. no. 6).



Step 7:  
Add 1x **P** between the second holes of the **T** from the previous row. String a total of 16x **P** (fig. no. 7).



Step 8:  
Add 3x **R11** between each **P** from the previous row. Thread the line again through the nearest **P** at the end of the row. Tighten the stringing of this row and tie it off with a knot. Pull the end of the line into the holes of the nearest seed beads and beads and cut it off (fig. no. 8).



Step 9:  
Cut a circle of ca 18 – 20 mm from the felt and firmly sew the brooch mechanism onto it (fig. no. 9a). Sew the entire semi-product onto the created brooch (fig. no. 9b). Cover the felt circle and the metal part with a circle of leather and once again carefully sew them together (fig. no. 9c).

