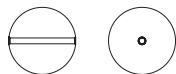




*Design by Helena Chmelíková*

**PRECIOSA Imitation Pearls**

131 19 001; 10 mm



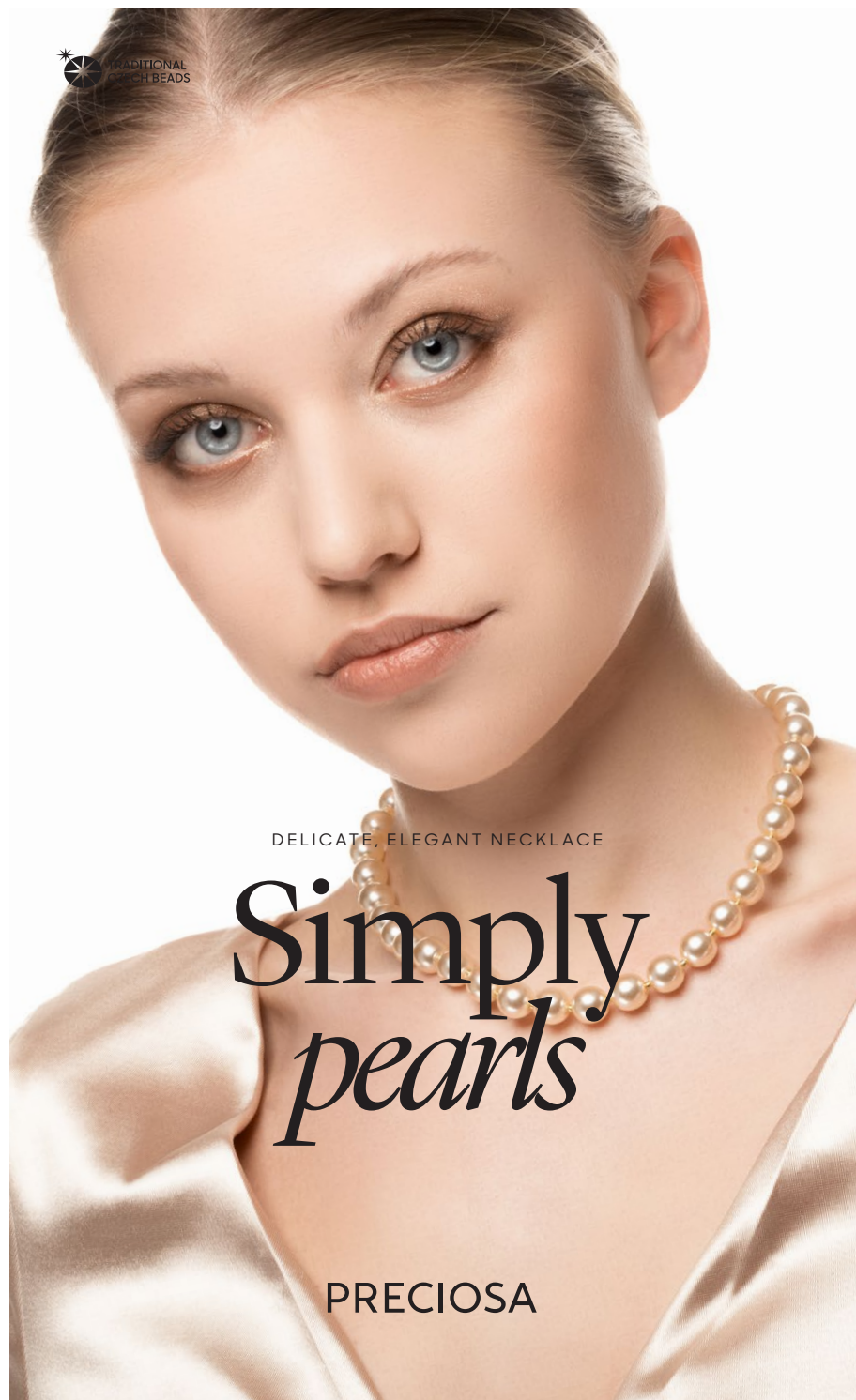
**PRECIOSA Rocailles**

331 19 001; 10/0



*Preciosa Ornela introduces beads and seed beads  
from the PRECIOSA Traditional Czech Beads™ brand.*

Preciosa-Ornela.com



TRADITIONAL  
CZECH BEADS

DELICATE, ELEGANT NECKLACE

Simply  
pearls

PRECIOSA

# Simply pearls

*Create an elegant necklace out of imitation pearls that will captivate at first glance.  
Get some cream-colored imitation pearls and get creating according to this simple tutorial.  
Your new necklace will adorn you or serve as a beautiful gift.*

## Materials and tools:

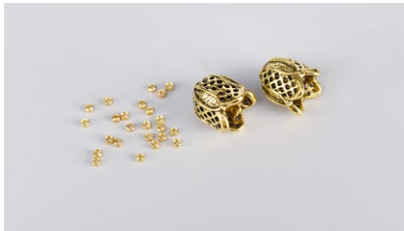
PRECIOSA Imitation Pearls (IP)  
131 19 001; 10 mm;  
02010/70014 cream; 34x



PRECIOSA Roccailles (R)  
331 19 001; 10/0;  
68304 gold; 31x



- cord end pieces - caps (a threading hole around 2 mm); metal crimp beads (MR)



- wire with a diameter of 0.38 - 0.40;  
a skewer with a diameter of about  
2.50 mm; a 3 mm wide ribbon - 1 m long  
(atlas double-sided)

- flat-nosed pliers; snipping pliers; scissors



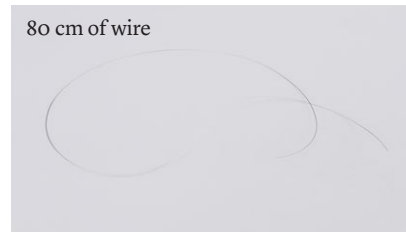
Difficulty: ●●●●●

Technique: stringing

## Procedure:

### Step 1

Snip off about 80 cm of wire. String 1s MR onto one end. Thread the same end of the wire back into the MR. Place the skewer in the loop. Tighten the loop. Crimp the MR using the flat nose pliers. Remove the skewer. String 1x IP and 1x MR onto the wire. String them both onto both pieces of wire up to the crimped MR. Crimp a new MR behind the IP.



### Step 2

String 32x IP onto the wire with 1x R between them. String the initial IP and R onto both pieces of wire. At the end, string 1x MR, 1x IP and 1x MR. Thread the end of the wire through the MR, IP, MR and several IP and R. Pull on the end of the wire to tighten the stringing. You can hold the wire behind the MR with the flat-nosed pliers. The wire will form a loop. Place the skewer in it. Tighten. Initially crimp the MR between the IP. Then crimp the MR at the edge of the stringing. Snip off the protruding end of the wire.

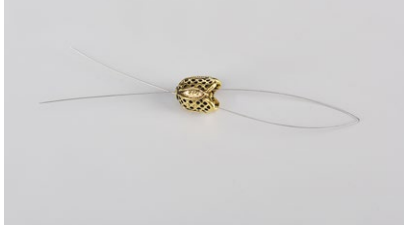




**Step 3**  
Cut the ribbon in half. Fold one 50 cm section in half. Thread both ends of the ribbon through the eye of the loop. Move the ribbon until it forms an eye. Thread the ends of the ribbon through it. Tighten.



**Step 4**  
Snip off about 20 cm of wire. Fold it in half using the flat-nosed pliers. Thread both ends of the wire through the hole in the cap from the outside. Pull the ends of the wire from the outer side of the opening. Insert both ends of the ribbon into the loop created in the wire. Pull on both ends of the wire until the ribbon passes through the opening. Use the flat-nosed pliers to help you. Press the cap up to the outer IP. Tie two knots in the ribbon behind the opening in the cap.



**Step 5**  
Repeat Steps 3 and 4 for the second eye on the wire.



**Step 6**  
Tie the ends of the ribbon in a classic bow. First tie a regular knot. Then create a loop on one side. Encircle it with the second part of the ribbon. Thread it under and create a second loop. Tighten. Pull behind the cap to tighten.

