



*Design by Helena Chmelíková*

**PRECIOSA Rocailles**

331 19 001; 10/0

331 39 001; 10/0



*Preciosa Ornela introduces seed beads  
from the PRECIOSA Traditional Czech Beads™ brand.*

Preciosa-Ornela.com



FABRIC DECORATION WITH PRECIOSA TERRA INTENSIVE LINING SEED BEADS

# Ruffled

**PRECIOSA**

# Ruffled

Combine the juicy, fruity shades of PRECIOSA Terra Intensive Lining and PRECIOSA Terra Intensive Matt seed beads. Add delicate fabric petals to enjoy a distinctive, unique accessory with a hint of lightly whipped cream.

## Materials and tools:

### PRECIOSA Terra Intensive Lining (R)

331 19 001; 10/o (R1)  
08A91 orange; 120 - 130x



331 19 001; 10/o (R2)  
08A77 pink; 120 - 130x



331 19 001; 10/o (R3)  
08A26 dark pin; 120 - 130x



### PRECIOSA Terra Intensive Matt (R)

331 39 001; 10/o (R4)  
16A91 orange; 120 - 130x



331 39 001; 10/o (R5)  
16A77 pink; 120 - 130x



331 39 001; 10/o (R6)  
16A26 dark pink; 120 - 130x



- a chain with small links; a round carabiner (a key ring)



- a thin needle; a 0.25 mm nylon line; scissors; a ruler; 8x fabric artificial roses with a diameter of 8-9 cm (simple layers that are either glued or reinforced from below with a plastic cup); a tailor's thread; a tailor's needle; snipping pliers; liquid glue for an absorbent surface



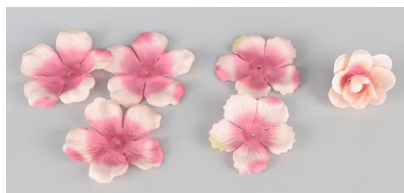
**Difficulty:** ●●●●●

**Technique:** simple sewing, stringing

## Procedure:

### The flowers

Gradually pull all the layers from one another on the glued flowers (3x large 9 cm flowers, 2x small 7 cm flowers, the centre). If there is too much glue on the material, it is advisable to scrape it off, for example with your finger nail or a needle. Petals with glue are difficult to bend and sew.



If the flowers have a plastic cup at the base, remove it and then take the individual layers from the stem.



## Step 1

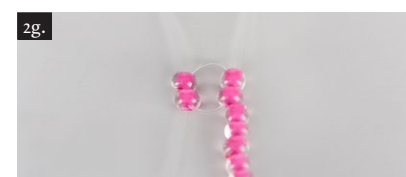
Prepare 16x large petals with a diameter of 9 cm (for example, 5x crème, 5x pink, 4x burgundy-beige, 4x cherry-beige) (fig. no. 1a).



## Step 2

Cut off about 55-60 cm of line. Create an R stop bead. String 1x R onto one end and thread the line through it one more time (fig. no. 2a). Thread the needle onto the second end (fig. no. 2b). String 9 cm of R (60 - 65x R). Move the stringing about 10 cm from the R stop bead (fig. no. 2c). Thread the line through the first 2x R in the stringing one more time (fig. nos. 2d + 2e). Thread the line through the last 2x R in the stringing one more time. Thread the line through the first and last 2 R once again. The R will form a teardrop (fig. nos. 2f + 2g + 2h). Thread the line through all the R up to the start of the line (fig. no. 2ch). Tie the ends of the line using two knots (fig. no. 2i). Cut off the R stop bead (fig. no. 2j). Tie off the ends of the line using two knots (fig. no. 2k).

Pull the ends into 10-20x R. One to the right and one to the left (fig. no. 2l). Cut off the ends (fig. no. 2m).

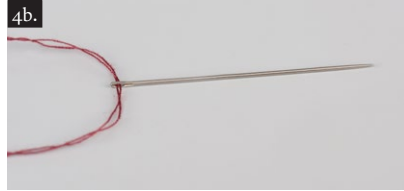




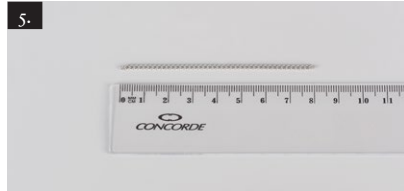
**Step 3**  
The teardrop is about 4 cm long. It is about 0.5 cm smaller than half the flower (9 cm : 2 = 4.5 cm). Prepare other teardrops from 2x R1, 2x R2, 2x R3, 2x R4, 2x R5 and 2x R6 (fig. no. 3).



**Step 4**  
Prepare 150-160 cm of the tailor's thread (an arm span). Thread both ends of the line into the eye of the tailor's needle. Move the needle to the centre of the double thread (fig. nos. 4a + 4b).



**Step 5**  
Prepare 8 cm of chain (fig. no. 5).



**Step 6**  
Start stringing the flowers with the R teardrops between them. When sewing, you can alternate the flower and teardrop shades as you wish (fig. no. 6a). Fold the flower back to back. Sew through it about 1 mm from the central hole. Thread the line through the teardrop made of R through the gap between the first six and last 2 R in the stringing (fig. no. 6b).

The sewing order  
1x flower - an R teardrop  
1x flower - an R teardrop  
2x flowers - an R teardrop  
1x flower - an R teardrop  
2x flowers - an R teardrop  
1x flower - an R teardrop  
2x flowers - an R teardrop  
1x flower - an R teardrop  
2x flowers - an R teardrop  
1x flower - an R teardrop  
1x flower - an R teardrop  
1x flower - both end links of the chain (fig. nos. 6c + 6d).



**Step 7**  
Tighten the sewing through the flowers and the R teardrops (fig. no. 7a). Tie off the line with three knots. Pull the flowers from one another when tying the first knot so that it is easier to tie the other knots. Cut off the ends of the thread about 0.5 cm from the knot. Put a drop of glue on the knot, for example using the point of the tailor's needle (fig. no. 7b).



**Step 8**  
Hang the chain on the round carabiner (fig. nos. 8a + 8b).

